

---

# SCHOOLS FORUM

Meeting to be held from 17:30 on Wednesday 22 January 2014

Venue: Enfield County School, Holly Walk, Enfield EN2 6QG

(NOTE: Sangeeta Brown, Resources Development Manager- 07956 539613)

---

## Schools Members:

### Maintained Schools:

Governors: Mr B Grayston (Primary) (Chair), Ms N Conway (Primary), Cllr I Cranfield (Primary), Mrs J Leach (Special), Mrs L Sless (Primary), Mr T McGee (Secondary), Mr G Stubberfield (Secondary)

Headteachers: Mrs P Alder (Primary), Vacancy (Secondary), Mr B Goddard (Secondary), Mr G Lefley (Pupil Referral Unit), Mrs S Moore (Primary), Mrs P Rutherford (Secondary), Mr P Smith (Primary), Mrs P De Rosa (Special), Mr R Yarwood (Primary)

Academies: Mr M Lees, Ms R Stanley-McKenzie

---

## Non-Schools Members:

Chair of Children's Services Scrutiny Panel

Cllr R Simbodyal

Early Years Provider

Mrs S Roberts

14-19 Partnership

Mr K Hintz

Teachers' Committee

Mr S McNamara

Assistant Director Education

Ms J Tosh

Head of Behaviour Support

Mr J Carrick

---

## Observers:

Cabinet Member

Cllr A Orhan

Education Funding Agency

Ms B Pennekett

---

\*\*\*\*\*

**MEMBERS ARE INVITED TO ARRIVE AT 17:15 PM**

**WHEN SANDWICHES WILL BE PROVIDED**

**ENABLING A PROMPT START AT 17:30 PM**

## AGENDA

(Target time)  
(17:30)

### 1. **APOLOGIES for ABSENCE**

### 2. **DECLARATION OF INTEREST**

Members are invited to identify any personal or prejudicial interests relevant to items on the agenda. A definition of personal and prejudicial interests has been attached for members' information.

(17:35)

### 3. **MINUTES AND MATTERS ARISING FROM THE MINUTES**

- a) School Forum Meeting held on 11 December 2013 (*attached*)
- b) Commissioning Group Meeting held 14 January 2014 (*to follow*)
- c) Matters arising for these minutes

(17:45)

**4. ITEMS FOR DECISION**

d) Schools Budget: (2014/15) – Update (*attached*)

(18:45)

**5. Workplan** (*attached*)

**6. Any Other Business**

**7. Future Meetings**

(a) Date of next meeting is set as 5 March 2014 at Enfield County School

(b) Proposed Dates for future meetings

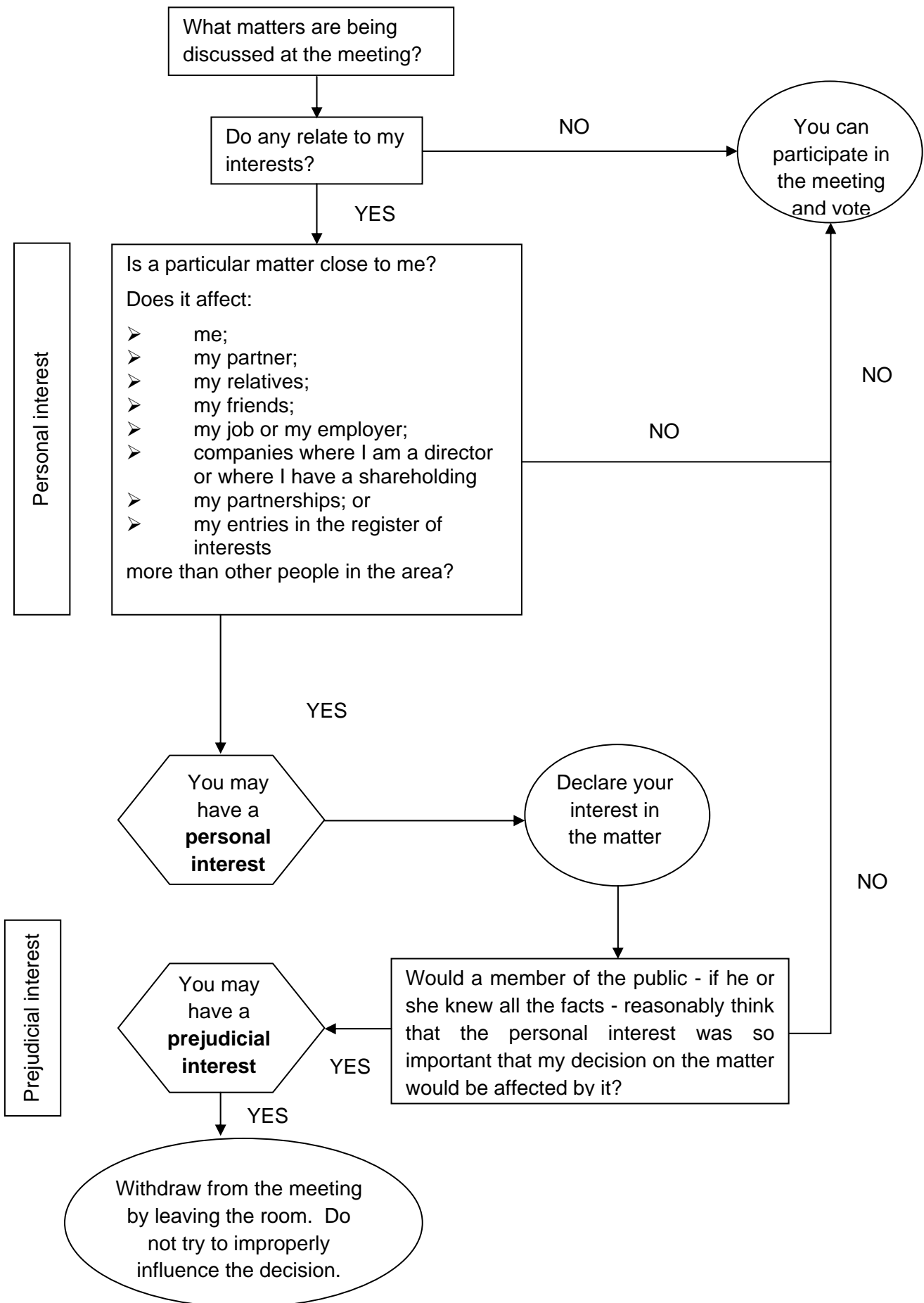
- 2 April 2014 - To be confirmed
- 16 July
- 15 October
- 10 December
- 21 January 2015
- 4 March 2015

**8. Confidentiality**

To consider which items should be treated as confidential.

# DECLARING INTERESTS FLOWCHART

## QUESTIONS TO ASK YOURSELF



# **MINUTES OF THE SCHOOLS FORUM MEETING**

**Held on 11 December 2013**

**At Enfield County School**

## **Schools Members**

Governors:	<i>Mr B Grayston (Primary), Ms N Conway (Primary), Mrs J Leach (Special), Mrs L Sless (Primary), Mr G Stubberfield (Secondary), Mr T McGee (Secondary), Cllr I Cranfield (Primary)</i>
Headteachers	<i>Mrs P Alder (Primary), Mr B Goddard (Secondary), Mr G Lefley (Pupil Referral Unit), Mrs S Moore (Primary), Mr P De Rosa (Special Schools), Ms P Rutherford (Secondary), Mr P Smith (Primary), Mr R Yarwood (Primary),</i>
Academies	<i>Mr M Lees, Ms R Stanley-McKenzie</i>

---

## **Non-Schools Members:**

Chair of Children's Services Scrutiny Panel	<i>Cllr R Simbodyal</i>
Early Years Provider	<i>Mrs S Roberts</i>
14-19 Partnership	<i>Mr K Hintz</i>
Teachers' Committee	<i>Mr Stuart McNamara</i>
Assistant Director Education	<i>Ms J Tosh</i>
Head of Behaviour Support	<i>Mr J Carrick</i>

---

## **Observers:**

Member (Observer)	<i>Cllr A Orhan</i>
Assistant Direct, Commissioning & Com. Engagement	<i>Ms E Stickler</i>
Finance Business Partner	<i>Ms J Fitzgerald</i>
Finance Business Partner	<i>Mrs Y Medlam</i>
Finance Business Partner	<i>Mrs L McNamara</i>
Resources Development Manager	<i>Mrs S Brown</i>
Resources Development Officer	<i>Ms J Bedford</i>

*Italics denotes absence*

### **1. INTRODUCTIONS and APOLOGIES for ABSENCE**

Apologies for absence were received from: Mrs Moore, Mr Grayston, Mr Stubberfield, Mr Yarwood, Cllr Simbodyal, Cllr Orhan.

**Noted** the absences of Mrs Alder, Mr Lees and Ms Stanley-McKenzie

### **MEMBERSHIP:**

**Reported** Ms Susan Tripp had confirmed that she would be resigning as a member of the Schools Forum as Special School Representative.

**Noted** Mr Peter De Rosa had been nominated as the Special Schools Representative.

The Forum welcomed Mr De Rosa to the Schools Forum.

### **2. DECLARATION OF INTEREST**

The following declarations of interest were made:

Item 5b Autism Provision: Mrs Leach and Mr De Rosa declared an interest in this item.

### **3. MINUTES AND MATTERS ARISING FROM THE MINUTES**

(a) Schools Forum meeting held on 16 October 2013

**Received** and agreed the minutes of the meeting of the Schools' Forum held on 16 October 2013, a copy of which is included in the Minute book.

- (b) Matters arising from these minutes  
Letter to DfE – Schools with Falling Rolls Item 6 (b): **Reported** after further discussion with officers at the DfE it was clear that they were not going to change their decision and therefore a decision was taken not to send any further communication at this time. There may be a need to follow up on this matter in the future.
- (c) Minutes of Commissioning Group Meeting held on 5 December 2013  
**Received** and noted the minute of the meeting of the Commissioning Group held on 5 December 2013, a copy of which is included in the Minute Book.

#### 4. ITEM FOR DISCUSSION

##### a) LA Budget Consultation

**Received:** a paper providing details on the LA Budget Consultation 2014-15, a copy of which is included in the Minute Book.

**Reported** the Council was consulting on the Budget 2014/15 and seeking views on the service priorities.

**Noted:**

- (i) This was the 4<sup>th</sup> year with 0% tax increases together with the significant cuts due to national funding changes and benefits, the need for the austerity measures to continue for longer meant it was getting harder and tougher. The Government had indicated that these levels of cuts would continue until 2018. So far and since the 2010 Comprehensive Spending review, the Council had faced 27% cash reduction in funding. It was anticipated that a further 2% saving would be imposed for 2014/15 and this would total a further £10.96m of savings.
- (ii) Information on the budget settlement for 2014/15 was due just before Christmas and the Council would then begin to finalise the budget proposals and this would be in context of reduced funding of at least 2%. The Council in setting its budget would prioritise making back office savings to protect front line services.
- (iii) Schools & Children's Services were reviewing services to assess which ones met the key priorities for the department and had the greatest impact on outcomes. The LA was working closely with Health colleagues to identify services which they should resource to meet their obligations and the LA.
- (iv) It was commented that the headings listed in the report did not provide sufficient details of the services affected by the proposed savings and therefore it was difficult to respond to these. It was suggested where comments were sought for the priorities that it would be helpful if there was a brief explanation added against each service so that an informed decision could be made.
- (v) It was commented with the changing environment, it would be helpful to have clarity of the services which were available to maintained schools only and those available to all schools including academies. It was stated that information had been provided to all Governing Bodies when the Academies Act was introduced and it was currently being updated for redistribution. This information could also be presented to the Schools Forum.
- (vi) It was uncertain the full impact of the proposed savings to the service users. The savings had been identified as those which have the least impact or not seen as a priority for meeting the outcomes for children and young people. The proposed savings for Schools & Children's Services had been assessed on how they fitted into the building resilience programme. The proposed saving for training programme efficiencies had been assessed to have a low impact. This training was originally

grant funded and the grant was not now available. Other proposed savings required the restructuring of teams and services.

- (vii) It was questioned whether the Forum should respond to the Consultation as a group or individually. It was stated that it was important to respond either individually or as the Forum.

It was commented that it was difficult to comment especially as there was little information on how the proposed savings linked to the priorities on which the comments were being sought and the effect the reduction in funding would have to children and young people. A concern was raised that there needed to be clarity on how the savings would effect maintained schools and academies.

The Forum considered that supporting schools was the main priority and then those services which supported children and young people.

**Agreed that:**

- (i) The Schools Forum would respond as follows to the priorities:

- 1 – Schools and pupil support
- 2 – Children’s social work
- 3 – Youth services

The Forum would like to comment where a response was sought for the priorities that it would be helpful if there was a brief explanation added against each service so that an informed decision could be made.

The minutes of the meeting would forwarded as being the Forum’s formal response to the consultation.

**Action: Mrs Brown**

- (ii) Members would also respond individually to the consultation.

**Action: Schools Forum Members**

- (iii) Item detailing information on the services available to maintained schools only and those available to all schools including academies will be added to the workplan.

**Action: Mrs Brown**

**5. ITEMS FOR DECISION**

**5(a) Additionally Resourced Provision (ARP)**

**Received** a briefing note providing details on the Additionally Resourced Provision (ARP) in Enfield, a copy of which is included in the minute book.

**Reported** the document explained the process for establishing an ARP. The development of the ARPs had taken place over a number of years and was being brought together under the Special Educational Need (SEN) Strategy. The Commissioning Group had requested a review of this provision and also Nurture Groups.

**Noted**

- (i) The provision which the Schools Forum had previously agreed would be based at Bowes / Chesterfield. It was questioned whether this provision would be limited to the pupils attending the schools. It was stated that the pupils accessing this provision would be those identified by the SEN Panel or had been excluded and referred by the Behaviour Support Service. The Behaviour Support Service worked closely to support the pupils and continued to do so with the pupils at the ARP.

The Forum were advised that Primary schools were very good at managing the needs of the Enfield pupils at their schools but difficulties often arose when a child from another LA was placed in an Enfield school. This was because intensive work had to be carried out to assess their needs. This ARP would provide an assessment based stop gap for the child prior to their permanent placement.

For permanent exclusions from out of borough schools at secondary level, these young people were supported by the Secondary Tuition Service

- (ii) Concerns had previously been raised of perceived inconsistencies in funding and therefore the forum wished to see transparent funding arrangements and networks in place for teachers with ARP's in their schools. The outcome from the funding review would be brought to the Schools Forum in January 2014.
- (iii) The ARP planned at Carterhatch School did not develop and the funding for this remains available and it was proposed that this be used to develop a satellite provision.

**Clerk's Note: Mr Hintz arrived at this point.**

- (iv) It was questioned whether there were evaluation and monitoring processes in place. It was stated the Service Level Agreement would include an annual monitoring review and the outcome from the reviews would be reported back to the Schools Forum. If the provision was not performing at the level expected then the provision would be withdrawn. An example of this was where funding had been removed for a Nurture group provision because the conditions contained in the Service Level Agreement were not being met.
- (v) It was commented that the Policy, Operational and Service Level Agreement for ARP's was an excellent document.
- (vi) It was difficult to agree to the changes until the information on the funding review was made available.

**Agreed** to note the report and the outcomes from the ARP funding review to be included on the Workplan

**Action: Mrs Brown**

5(b) **Autism Provision - Update**

**Received** a paper providing details on Autism Provision Update, a copy of which is included in the minute book.

**Reported** the paper provided a summary of the work being done to consider how to support the needs of the increasing number of children and young people with autism.

**Noted:**

- (i) There were approximately 30 primary aged pupils some who were in mainstream schools and others not in any provision and this number exhibiting high levels of need was continuing to increase on a daily basis. The feedback from schools was that the needs of the pupils needed to be met from appropriate provision otherwise there was a risk of break down. It was stated currently a Primary and Secondary SEN officer was funded to work with schools and that it was proposed a LA Advisory Specialist for Autism be recruited a co-ordinate a clear and coherent strategy to meet the needs of these children and young people (CYP).
- (ii) There were an increasing number of children as young as 2 years who were being diagnosed with autism but as these children were diagnosed so early it meant that when they started school the diagnosis was not always appropriate to meet the needs

of the children in an education setting. In other instances, the CYP may have been suffering trauma due to experiences in their native country and this was misdiagnosed as autism because the symptoms exhibited were very similar. There was a need to ensure all involved were supported appropriately. This included the CYP, their parents and also staff.

- (iii) The strategy would need to consider how to address an urgent need for emergency or temporary provision to be developed so that these CYP were not placed in expensive out of borough provision. It was stated that Russet House had not developed a primary ARP as previously agreed but were now looking to expand their Outreach provision and it was proposed the funding previously identified for the ARP be re-directed.

Generally, there was an issue of lack of space within existing special schools because had been expanded to accommodate the increase in the number of CYP with SEN. Following a symposium of key professionals, it had been identified as part of the long term strategy, a new school for special needs provision with high needs autism for 100+ young people would be required and work had started and a business case for funding to present to the DfE was being drafted.

Mr De Rosa confirmed Durants School had 95 places and was currently full, and to meet the needs of the increasing number of pupils, the School would need to provide at least 140 places. There was an urgent need to ensure there were sufficient places the pupils moved from primary and secondary into Special schools.

**Clerk's Note: Mrs Rutherford left at this point.**

- (iv) The Forum was generally supportive of the proposals outlined. It was commented that the provision and the use needed to be monitored.

It was stated that the current outreach provision provided by Russet House was supporting many pupils to stay in mainstream education. The work being done by Russet House also included training the mainstream staff to manage these vulnerable pupils. It was noted the work being done by SENCOs and other staff in mainstream school to support these vulnerable CYP was fantastic but there were still some pupils in mainstream schools whose needs would be better met in a Special School setting.

- (v) It was questioned whether it was known the number of places which would be required. It was stated that the exact numbers of children with significant needs coming into reception classes was unclear as some but not all the children were diagnosed early. The Joint Service for Disabled Children were working with the SEN Service as well as Children's Centres, to establish accurate data of pre-school children coming into schools, but with the high level of movement both into and out of the borough this was proving to be a challenge.

**Agreed to:**

- (i) Prioritising DSG SEN funding carried forward from last year for the development and support of Children & Young People (CYP) with autism who are not having their needs met. This would include the possible funding for a LA advisory specialist post for Autism;
- (ii) The ARP funding be allocated for the primary satellite provision to increase the Russet House outreach provision to support CYP in mainstream at primary schools.
- (iii) The growth fund being used to develop temporary provision for autism
- (iv) A second secondary satellite provision be funded for September 2014The Schools Forum to champion this issue.



- (v) A report back to the Forum on the timescales and feedback on the proposed developments.

**Action: Mrs J Tosh**

- 5(c) **Dedicated Schools Grant: Central Budget (2013/14 & 2014/15)**  
**Received** a paper providing details of the Dedicated Schools Grant: Central Budget (2013/14 – 2014/15), a copy of which is included in the minute book.

**Reported** the Commissioning Group had sought update on the use of the centrally retained budgets within DSG.

**Noted:**

- (i) The report highlighted a wide range of services which were being provided to schools through these budgets.
- (ii) It commented that the report was helpful but the Commissioning Group had requested that future reports included information on the impact the activities had had on improving and meeting the outcomes. The group had also requested the updates be provided on an annual basis.

**Agreed to** continued use of funding to support the Central budgets.

**Clerk's Note: Cllr Cranfield and Mr Lefley left at this point.**

- 5(d) **Schools Budget (2014/15)**  
**Received** a paper providing an update on the Schools Budget (2014/15), a copy of which is included in the minute book.

**Reported** the report included information on the proposed allocation of the Dedicated Schools Grant (DSG) based on estimated pupil numbers using the local data available from the October Census. The notification of the settlement for the DSG and also the pupil data was due to be received on 18 December 2013. Once the final information had been received, this would then be used to finalise the allocation of the DSG for consideration by the Schools Forum at the meeting due to be held on 22 January 2014.

**Noted:**

- (i) There was a requirement to submit a final statement on how the rates to be used for the funding formula by 21 January and a request had been submitted to the DfE for the submission of this return be delayed until after the Schools Forum meeting.
- (ii) An assumption had been made that funding would be provided in full to meet the new target of providing 3,000 nursery places for disadvantaged two year olds. This was an increase from 1,500 to 3,000. The final arrangements and funding would be included as part of the notification of the DSG.
- (iii) The estimated local pupil data collected from the October 2013 Pupil Census was indicating an increase in primary numbers and a reduction in secondary pupil numbers. As the schools block was based on pupil numbers, this change would be reflected in the funding to be received from the DSG.
- (iv) There was an indication from the DfE that there were likely to be changes to the methodology for calculating the 2014-15 DSG allocation for the High Needs Block.
- (v) The pressures which had been identified included known demographic changes, adjustments for rates and the loss of funding due to numbers for reception uplift which is the number of reception pupils on roll between the October and January Census which is estimated at £.7m and transitional protection for 3 year old nursery funding. It was stated since the report had been published, the Chancellor had confirmed that

rate increases were to be capped at 2% so this would mean the amount identified in the report would reduce by £40k.

- (vi) The budget would need to be further developed to include the provision for Autism as discussed earlier during the meeting, supporting schools with falling rolls and also for the use of the carry forward.
- (vii) It was questioned whether there was any information on the financial position for academies and whether they bought back into LA services. It was stated that that LA had a good relationship with academies and information on buybacks would be provided.

**Noted the draft budget position and agreed to for 2014/15:**

- (i) Continuation of the growth fund at a cost of £1.8m;
- (ii) Continuation of central provision of 14-16 Practical Learning Options by pooling budget totalling £111k;
- (iii) To create a fund for schools with falling rolls through the delegation and de-delegations of a contingency sum;
- (iv) To the continued de-delegation of central services as detailed in the report.

**6. ITEMS FOR INFORMATION**

**a) Pupil Count – Impact of Changes**

**Received:** a paper providing details of the Pupil Count, a copy of which is included in the minute book.

**Noted**

- (i) the impact on the change in pupil numbers and how this affected individual schools was continually being monitored and changes were, in the main, either by:
  - Supporting extra pupils by expanding the number of classes in a year group, or
  - Pupils being admitted after the normal admission period.
- (ii) The current projection showed for 2014/15 an increase in pupil numbers for the primary sector and a slight dip for the secondary sector. It was stated that secondary sector was projected to rise sharply from 2017.

**b) Pupil Places Strategy**

**Received:** a report on the School Expansion Programme: Phase 2 2013/14 – 2017/18, a copy of which is included in the minute book.

**Reported** phase 2 of the school expansion programme is in continual discussions.

It was questioned how the sites for the primary school are to be developed on a secondary school site. It was responded that all Secondary Head teachers were asked to consider whether their schools site would be able to provide primary places and submit an expression of interest.

A range of responses were received and these were assessed against the criteria for need and Edmonton County was identified as the most appropriate site to address and meet the needs for primary schools places.

The Forum received and noted the report.

7. **WORKPLAN**

**Received** the Workplan for the Schools Forum meetings, a copy of which is included in the Minute Book.

8. **FUTURE MEETINGS**

(a) Date for the next meeting: Wednesday 22 January 2014 – Venue to be confirmed.

(b) Proposed date for a future meeting was confirmed as 5 March 2014 – Venue to be confirmed.

9. **CONFIDENTIALITY**

None of the above was regarded as confidential.

## MUNICIPAL YEAR 2013/2014 REPORT NO. 24

**MEETING TITLE AND DATE:**  
Schools Forum – 22 January 2014

**REPORT OF:**  
Director of Finance, Resources & Customer Services

Contact officer and telephone number:  
Jayne Fitzgerald 020 8379 7171  
E-mail: [jayne.fitzgerald@enfield.gov.uk](mailto:jayne.fitzgerald@enfield.gov.uk)

	<b>Item: 4</b>
<b>Subject:</b> <b>Schools Budget &amp; Formula Factors</b>	
<b>Wards: All</b>	

### 1. EXECUTIVE SUMMARY

This report sets out details of the initial 2014-15 Dedicated Schools Grant (DSG) announced on December 18th together with the data-set to be used to calculate 2014-15 Budget Shares for primary and secondary schools.

Information on the proposed formula factors and associated unit values as detailed in the report was submitted to DfE on 21st January 2014 for approval, subject to ratification by Schools Forum.

The report provides updated information on the proposed budget for 2014/15 including budget pressures to be funded from the 2014-15 DSG and balances brought forward.

The report seeks the support of Schools Forum to finalise the unit values for the primary and secondary funding formula. A further report will be presented to Schools Forum in March 2014 to agree the final application of the DSG for 2014-15 for the Early Years and High Needs Blocks

### 2. RECOMMENDATIONS

**The Schools Forum is asked to agree:**

- The revised unit values for the primary and secondary funding formula as set out in Appendix B and para 3.4
- A further reduction in central budgets from previously reported of £0.300m for CERA (para 3.4)
- An increase to the Growth Fund of £0.221m as detailed in para 3.5
- A cap on funding gains of 3% per pupil as detailed in para 3.5
- The creation of a schools specific contingency to support schools in financial difficulty as set out in para 3.6

**The Schools Forum is asked to note:**

- The 2014/15 DSG settlement and draft budget set out in Appendix A
- The indicative individual budget shares resulting from the 2014/15 dataset and the proposed formula factor unit values as set out in Appendix C

### 3. Dedicated Schools Grant Announcement 2014-15

The current “spend-plus” methodology introduced in 2013-14 has been continued for 2014-15, set out in three spending blocks for each authority: an early years block, a schools block and a high needs block. The underlying schools budget will be kept at flat cash per pupil for 2014-15.

The initial 2014-15 DSG announced on 18<sup>th</sup> December 2013 was £293.130m, including funding for the extended two year old offer. Including our estimated uplift for Early Years as detailed in paragraph 3.2 produces an initial forecast of £293.796m for the 2014/15 DSG, as set out in Appendix A. The High Needs block funding will be updated at the end of March based on the return made to the DfE in December detailing places. We are awaiting clarification of further adjustments that the DfE have indicated they will make to the High Needs block allocation relating to post 16 SEN funding. The initial estimate of additional DSG available for budget pressures is £1.838m.

#### 3.1 Schools Block

The value of the schools block in the settlement is £242.793m (including £0.071m for training for NQT) and is based on a Guaranteed Unit of Funding (GUF) per pupil of £5,194. The pupil count is from the October 2013 census for primary and secondary schools and academies uplifted by the increase in reception pupils from October to January the previous year. This will reflect the fact that the January pupil count for reception pupils is usually higher than it is in October.

As previously reported the Department of Energy and Climate Change (DECC) announced on 10 December 2012, that all state funded schools in England will be withdrawn from participating in the CRC Energy Efficiency Scheme from April 2014. This means that local authorities will no longer be required to administer the CRC Energy Efficiency Scheme on behalf of schools. A deduction of £0.280m was made from Enfield’s DSG for 2014-15 to compensate for this, compared to the centrally retained budgets of £0.250m which will be removed.

**Recommendation: To reduce central budgets by £0.250m in respect of the CRC allocations.**

#### 3.2 Early Years Block

The value of the Early Years Block in the settlement is £12.539 m and is based on a Guaranteed Unit of Funding (GUF) per pupil of £3,948.

The announcement for the Early Years block is provisional as the figure is based on the January 2013 census and will be revised when the January 2014 and January 2015 pupil counts are available. The actual grant for 2014/15 will be calculated as 5/12 of January 2014 plus 7/12 of January 2015. The total DSG stated in Appendix A includes an estimate of £0.666m to reflect this adjustment, giving a revised Early Years block estimate of £13.205m.

In addition to the funding for Three and Four year olds, funding has been received for the extended Two Year Old free entitlement in the sum of £7.717m, including trajectory funding of £0.846m. From Autumn 2014 the Two Year Old free entitlement is extended to the 40% most deprived children which has resulted in a target number of places of 2716 in the Autumn Term 2014 & Spring Term 2015.

### **3.3 High Needs Block**

The value of the High Needs Block in the settlement is £30.362m. This includes funding for special schools and ARPs. The basis for funding a high needs learner has not changed and is made up of three elements:

- Element 1 - the basic entitlement to education ie the AWPU for pre16 pupils and the national programme funding for post 16 pupils
- Element 2 - the notional allocation for additional learner support (£6k)
- Element 3 – Top up funding

For Pre 16 pupils elements 1 and 2 reflect the £10k place funding

#### Pre 16 - High Needs Potential Pressures and Savings

The draft budget included in Appendix A does not yet include any changes to requirements in respect of budget savings or pressures. These are currently being assessed and will be reported back to Schools Forum in March when the final application of the DSG is approved.

#### Post 16 - High Needs Provision

As part of the changes to high needs funding the DfE transferred post 16 SEN funding to the Local Authority in the DSG for the period commencing August 2013 (part year effect of 2013/14 academic year). This new mechanism for funding post 16 learners started in August 2013 and the funding was transferred to the DSG in two parts: SEN Block grant for the period April –July 2013 and funding for element 3 for the period August to March 2014. 2014/15 will therefore be the first full year of the new arrangement. In the settlement there has been an unexpected change to the methodology for allocating DSG for post 16 SEN pupils and clarification has been requested from the DfE regarding their stated intention to further adjust the High Needs block allocation for this element by topslicing element 2 funding. If confirmed this could be a loss of DSG to the authority.

#### Special Schools

Funding has been assumed at 2013/14 rates and will be reviewed for the March report.

#### High Needs Growth

We are awaiting notification of any growth allocated for 2014/15 following the December returns.

#### Contingency

A contingency was built into the High Needs Block in 2013/14 to fund any unexpected pressures resulting from the new funding arrangements or costs that are higher than anticipated. This is being reviewed alongside pressures and savings to assess whether this is needed in 2014/15

### **3.4 Statement to show the estimated 2014/15 DSG and Budget Pressures**

Appendix A shows the estimated DSG for 2014/15 and potential budget pressures to be met from the net estimated increase in funding. The position will be revised as

soon as any outstanding information relating to High Needs is confirmed by the DfE. The increase in estimated DSG available for budget pressures is £1.838m compared to variations of +£2.367 currently identified, resulting in a gap of £0.528m that will need to be bridged when the budget is finalised in March.

A significant loss to the DSG in 2014/15 relates to the ending of transitional protection following the removal of the 90% funding threshold for 3 and 4 year olds. In 2013/14 as part of a one off transitional process the DfE provided protection of £1.26m based on 50% of the amount funded in 2012/13. This transitional arrangement was for one year only resulting in a loss of £1.26m to the DSG from 2014/15 when 3 and 4 year olds will be fully funded on participation

The other main adjustment to DSG base is in respect of carbon reduction credits as detailed in para 3.1 above. This results in a reduction of £0.280m which is £0.030m higher than budget provision.

### Cost Pressures and Savings

A number of areas of growth or budget pressures need to be funded from the increased DSG:

#### Growth Fund

As agreed at the December Schools Forum meeting, the authority will hold a Fund to support growth in pre 16 pupil numbers. This was previously agreed at £1.8m for 2014/15 but has been recalculated as £2.015m, an increase of £0.221m on 2013/14 funding levels. Funding allocations from the Growth Fund will be based on previously agreed criteria and methodology and any under spend on the fund will be distributed as school budget shares in the following year.

**Recommendation: To agree an increase of £0.221m to the Growth Fund, giving a total growth fund of £2.015m for 2014/15.**

#### 2 year old funding

As noted above the DSG settlement for 2014/15 includes funding in relation to 2 year nursery provision of £7.717m. An estimated increase in costs of £1.405m based on projected numbers placed has been included in the budget. Based on these forecast numbers Enfield's allocation may not be fully utilised on 2 year old provision in 2014/15, releasing funding of around £1.3m. It should be noted however that as funding is expected to be based on participation from 2015/16 this is a one-off windfall that cannot be relied on in the base budget going forward.

#### Demographic Pressure in Schools and Early Years

A pressure of £1.015m has been included resultant from demographic and cost pressures in schools, including the transfer of responsibility for Oasis Hadley primary. This also includes an increase of approximately £0.180m from inflation of 2% on rates and for rates revaluations.

Early years cost pressures are calculated as £0.446m based on estimated increases in numbers in the January 2014 and 2015 census.

#### Central Budgets

Schools Forum December agreed the allocation of funding for schools related centrally retained budgets. Finalisation of budgets for 2014/15 has identified a saving of £0.300m that can be made in respect of capital expenditure funded from revenue (CERA).

**Recommendation: To reduce the central budget for capital expenditure funded from revenue by £0.300m**

### 3.5 Formula Funding Factors

At the end of October 2013 the authority submitted a provisional proforma to the DfE detailing the national formula factors and indicative unit values for the primary and secondary funding formula based on 2013/14 data. Since the last Schools Forum meeting the formula has been updated to reflect the October 2013 dataset which shows

- Increase in primary pupils
- Decrease in secondary pupils
- Decrease in FSM eligibility
- Increase in EAL
- Decrease in AEN

A significant reduction in eligibility for Free School Meals has been recorded in the October census and this resulted in a reduction of around £2.8m formula funding allocated through this factor. In order to restore the total level of schools funding and to maintain the funding allocated through this factor, which is the main indicator of deprivation used in the formula, it is proposed to increase the unit values from those agreed in December as follows:

<b>FSM rates</b>	Dec	Jan
	£	£
Primary	1252.90	1514.27
Secondary	1771.22	1971.00

Residual headroom has been allocated via an increase of £10.59 in the secondary AWPU. Revised unit rates are set out in Appendix B

Continuation of the Minimum Funding Guarantee in 2014/15 is a statutory requirement and ensures that no school sees more than a 1.5% per pupil reduction in 2014-15 budgets (excluding sixth form funding) compared with 2013-14 before the Pupil Premium is added.

It is proposed to continue with the local agreement to include a cap on formula gains. For 2014/15 it is proposed to set the cap at 3% per pupil.

**Recommendation: To approve a cap on funding gains of 3% per pupil.**

Details of school by school allocations are shown in Appendix C based on the indicative unit rates detailed in Appendix B. The estimated actual budget allocations for schools include MFG allocations, where applicable, and the impact of the funding cap for



schools who gain through the new formula arrangements. It should be noted that these figures exclude any allocations from the Early Years or High Needs Blocks.

**Recommendation: The forum is asked to note and agree the formula factors and unit rates detailed in Appendix B which was provisionally submitted to the DfE by their deadline of 21 January 2013.**

### **3.6 Allocation of contingency funding from DSG balances**

It will be evident from the tables that as in previous years variations in funding correlate to changes in pupil numbers. Due to the increased percentage of funding that is pupil led in the new funding formula these variations can be significant where schools have growth in numbers or where conversely schools have falling rolls, as is the case in a number of Enfield's secondary schools. Under the new regulations it is no longer possible to include protection for overall funding losses, as the MFG only provides protection on a per pupil basis.

Several schools have experienced difficulties with setting balanced budgets in recent years and this situation is likely to worsen in the next year due to the fall in pupil numbers in secondary schools. In order to provide funding to work with these schools and provide short term support, it is proposed to make an allocation of £0.800m from DSG reserves in order to create a schools specific contingency for schools in financial difficulties.

**Recommendation: To allocate £0.800m from DSG balances in order to create a fund for schools in financial difficulties.**

### **3.7 Potential Risks**

There are a number of risks within the draft budget that cannot be fully quantified at this time. The key risks include potential pressures to the SEN budgets due to growth that is not fully compensated through the DSG and changes in forecast Early Years numbers. The position will be updated when the High Needs settlement is finalised and activity will be monitored through the year to identify emerging pressures.

## **4.0 Other Schools Funding**

### **4.1 Pupil Premium**

As previously reported it has been confirmed that the level of the Pupil Premium has been increased in 2014/15 from £953 to £1300 for qualifying primary school pupils and from £900 to £935 for qualifying secondary pupils. (It has recently been announced that an additional £53 per primary pupil will be paid in 2013/14 ) A total of £21.786m has been provisionally allocated to LBE for 2014/15 and provisional allocations per schools are shown in Appendix D.

### **4.2 Sixth Form Funding**

Allocations will be confirmed to institutions by the DfE by the end of March.

## MUNICIPAL YEAR 2013/2014 – REPORT NO. 25

**MEETING TITLE AND DATE:**

Schools Forum – 22 January 2014

**REPORT OF:**

Director of Schools & Children’s Services

Contact officer: Sangeeta Brown

E-mail: [sangeeta.brown@enfield.gov.uk](mailto:sangeeta.brown@enfield.gov.uk)

**Recommendation**

To note the workplan.

<b>Agenda – Part:</b>	<b>Item: 5</b>
<b>Subject:</b> <b>Schools Forum: Workplan</b>	
<b>Wards: All</b>	

<b>Meetings</b>		<b>Officer</b>
January 2014	Schools Budget: 2014/15: Update	JF
March 2014	School Budget 2014/15: Update Additionally Resourced Provision Enfield Traded Services to Schools	YM JT SB
April 2014	Universal Free School Meals ? Academies Programme – Update ? Scheme for Financing Schools	SB
July 2014	School Funding Review (2014/15) School Funding Arrangements (2015/16)	SB SB
October 2014	Schools Budget: 2015/16: Update Responses to consultation on School Funding Arrangements (2015/16) Outturn Report 2013/14 Schools Balances 2013/14	YM SB JF SB
December 2014	Schools Budget: 2015/16: Update, Inc. De-delegation Central Budgets: Annual Report Local Authority Budget (2014/15) Pupil Places strategy	JF JT ES JT
January 2015	Schools Budget: 2015/16: Update	JF
March 2015	School Budget 2015/16: Update Enfield Traded Services to Schools	YM SB

**Dates of Meetings**

Date	Time	Venue	Comment
22 January 2014	5.30pm – 7.30pm	Enfield County School	
5 March	5.30pm – 7.30pm	Enfield County School	
2 April	5.30pm – 7.30pm		
16 July	5.30pm – 7.30pm		
15 October	5.30pm – 7.30pm		
10 December	5.30pm – 7.30pm		
21 January 2015	5.30pm – 7.30pm		
4 March	5.30pm – 7.30pm		